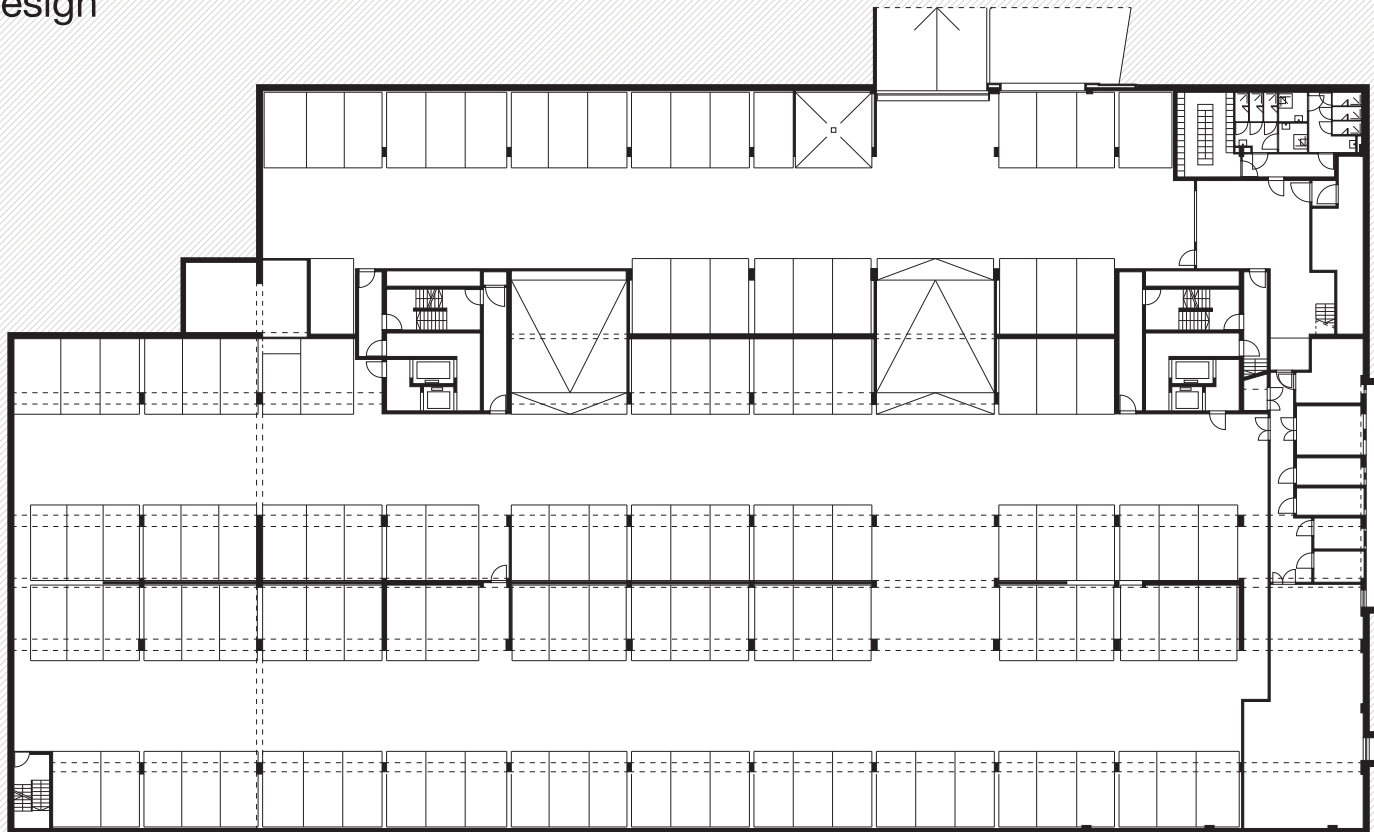


POLO.

urbanism
architecture
interior design
labs



Kortrijk Business Park

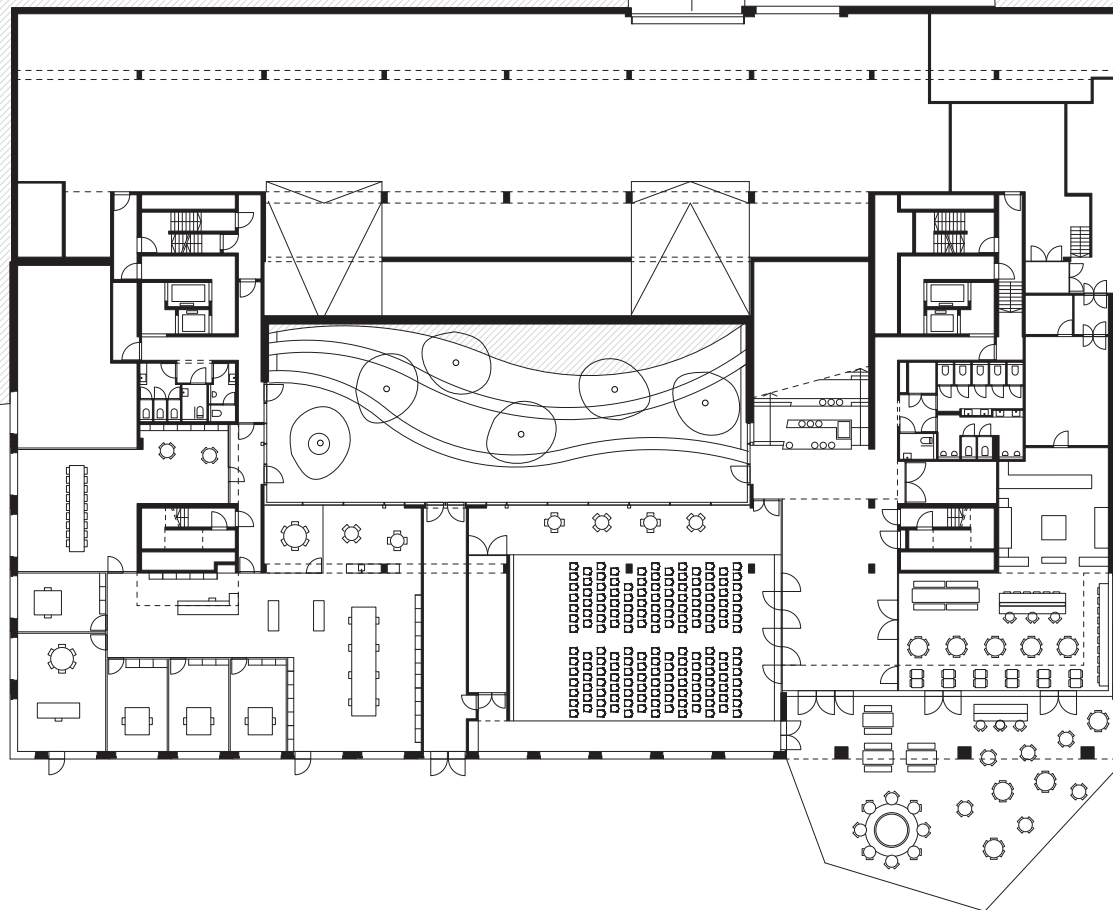
niveau -01



1:500

POLO.

urbanism
architecture
interior design
labs



Kortrijk Business Park

niveau 00.B

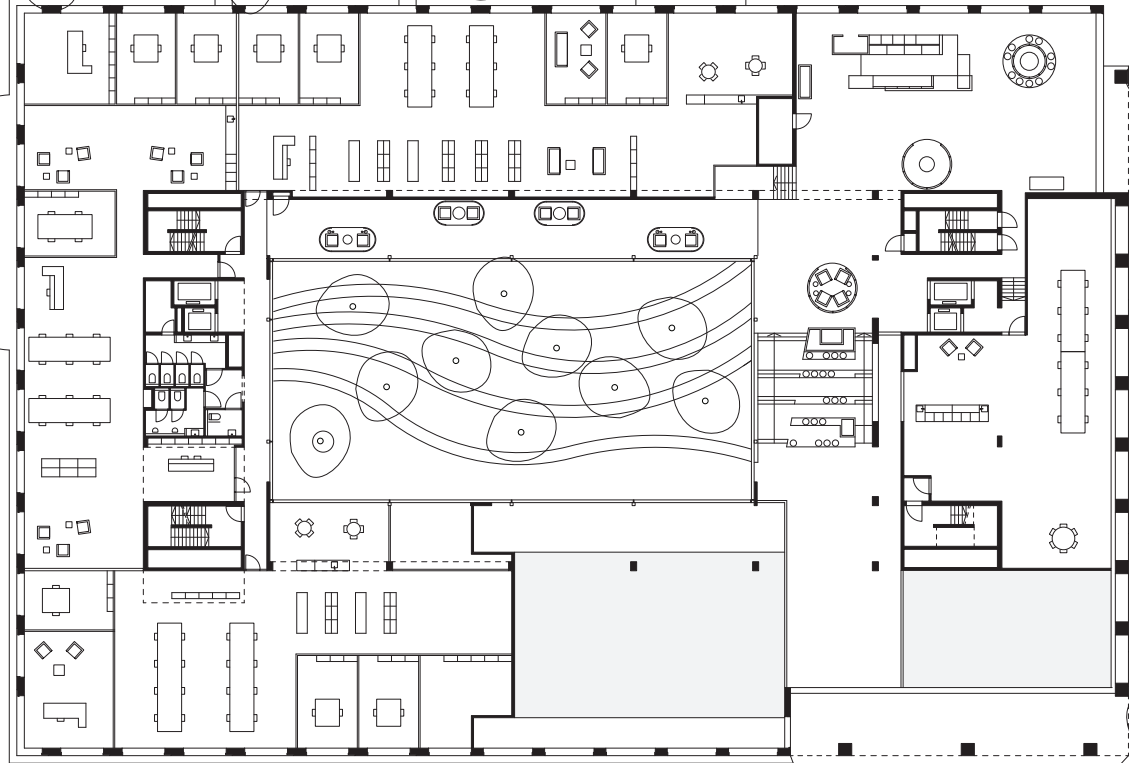
0 10 20 m



1:500

POLO.

urbanism
architecture
interior design
labs



Kortrijk Business Park

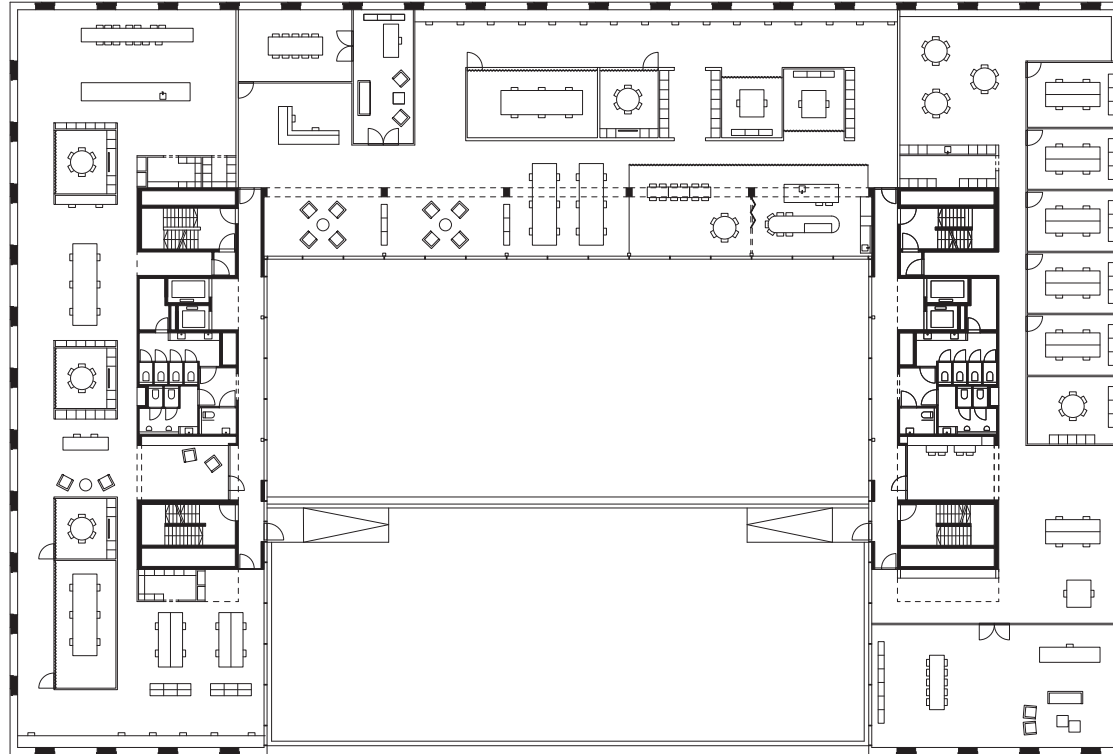
niveau 00.A

0 10 20 m

1:500

POLO.

urbanism
architecture
interior design
labs



Kortrijk Business Park

niveau 04



1:500

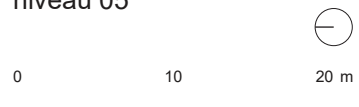
POLO.

urbanism
architecture
interior design
labs



Kortrijk Business Park

niveau 05



1:500

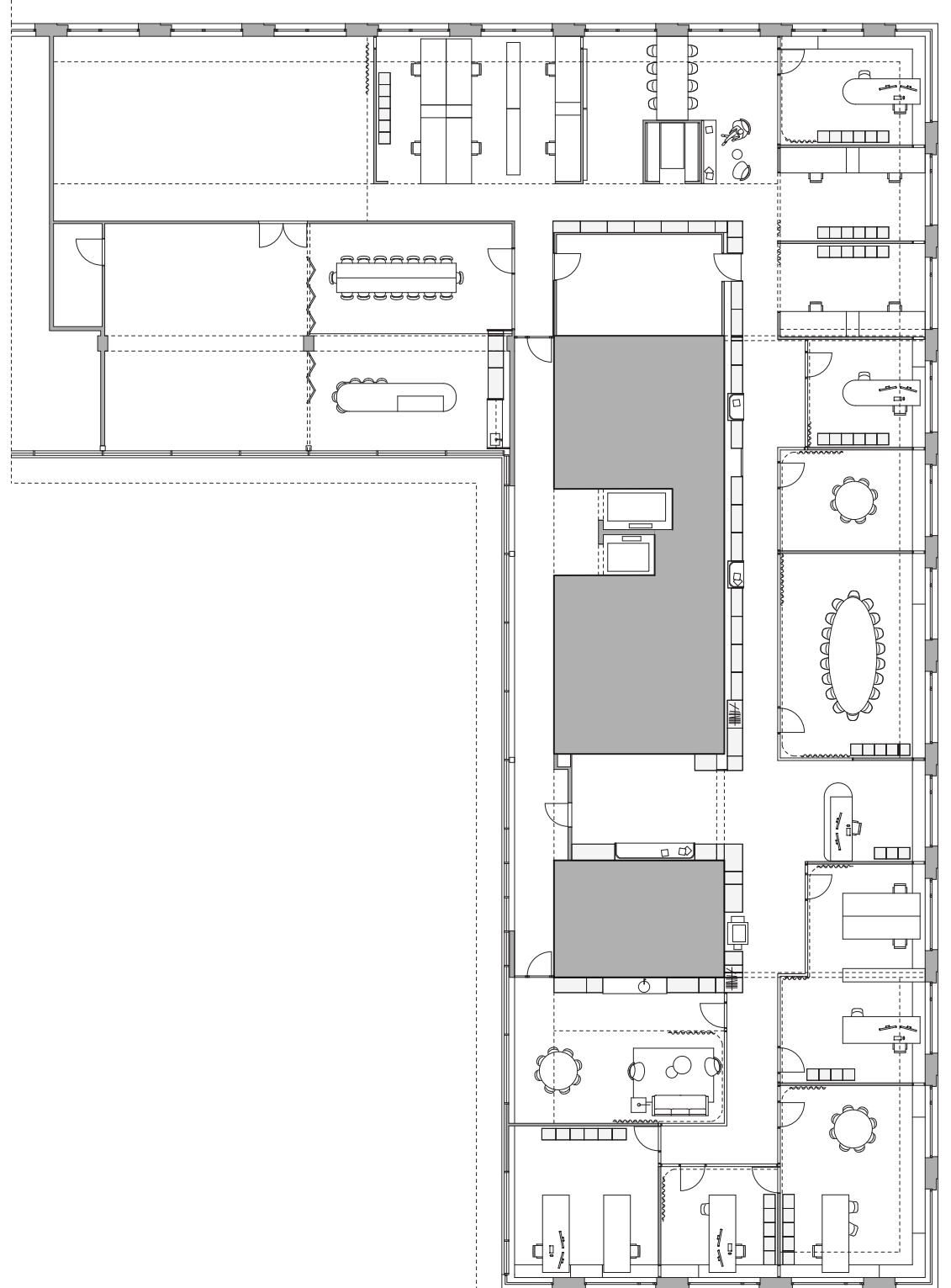
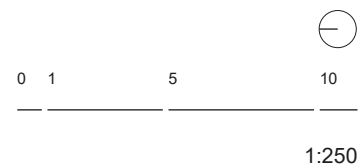
POLO.

urbanism
architecture
interior design
labs



Kortrijk Business Park

detail niveau 05
kantoren Verstraete Development

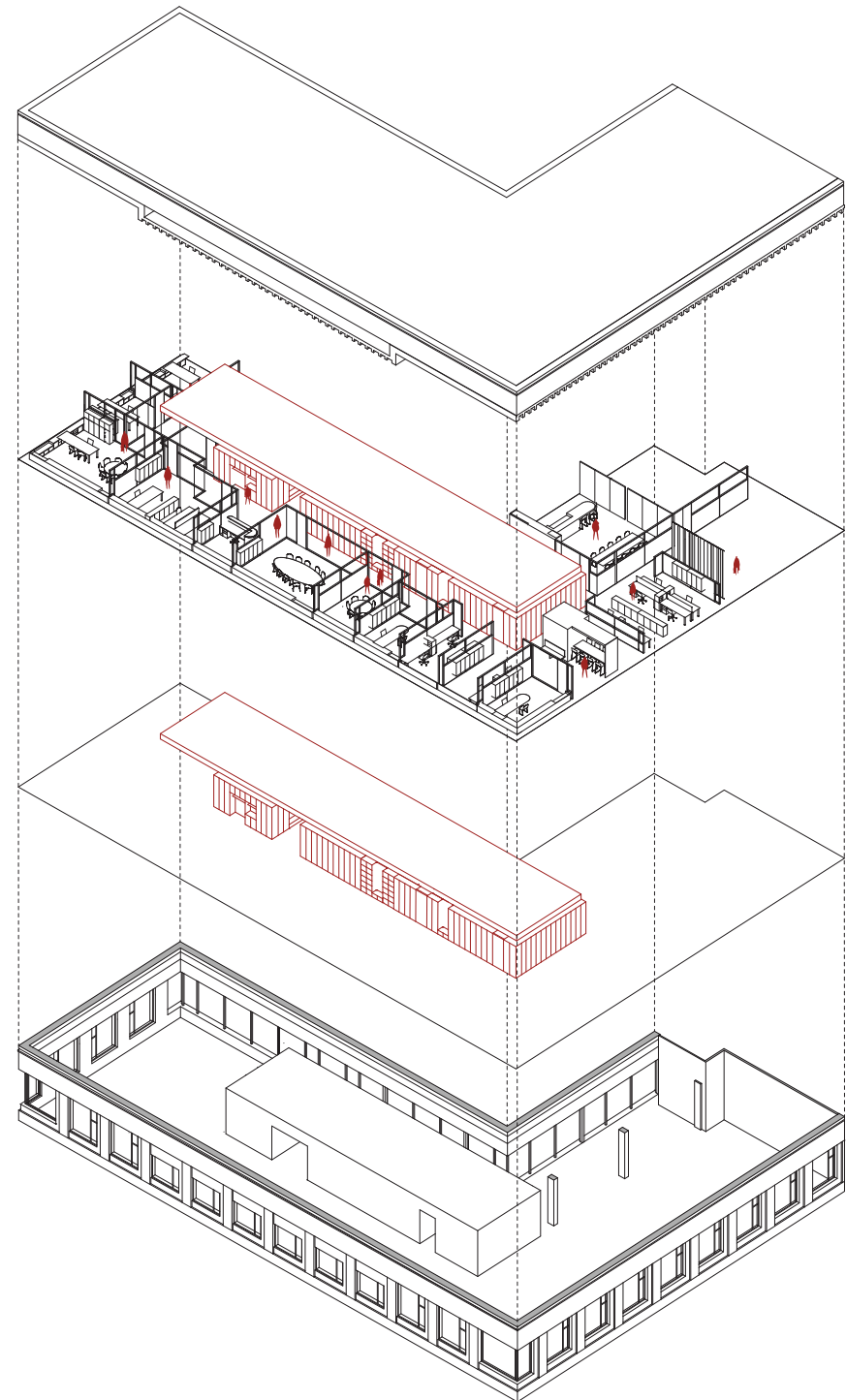


POLO.

urbanism
architecture
interior design
labs

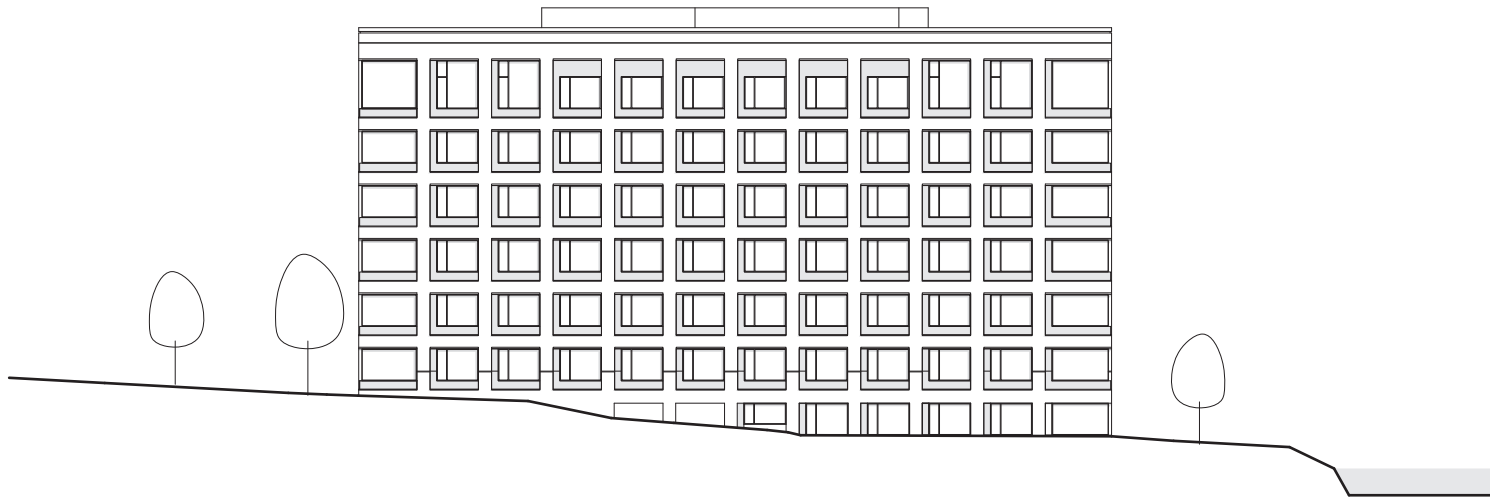
Kortrijk Business Park

isometrie
kantoren Verstraete Development



POLO.

urbanism
architecture
interior design
labs



Kortrijk Business Park

noord gevel

0 10 20 m

A horizontal scale bar with three segments. The first segment is labeled '0', the second '10', and the third '20 m'.

1:500

POLO.

urbanism
architecture
interior design
labs



Kortrijk Business Park

oost gevel

0 10 20 m

1:500

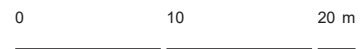
POLO.

urbanism
architecture
interior design
labs



Kortrijk Business Park

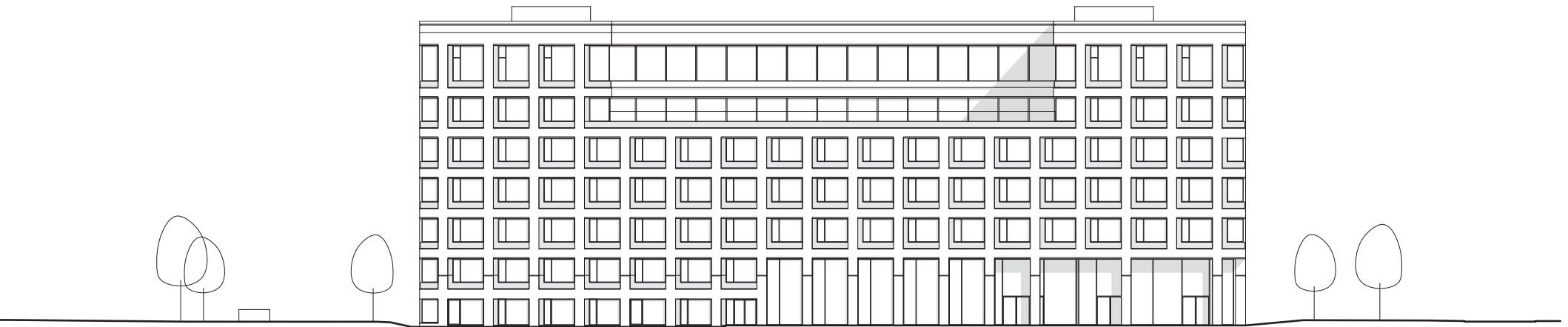
zuid gevel



1:500

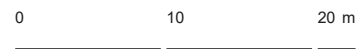
POLO.

urbanism
architecture
interior design
labs



Kortrijk Business Park

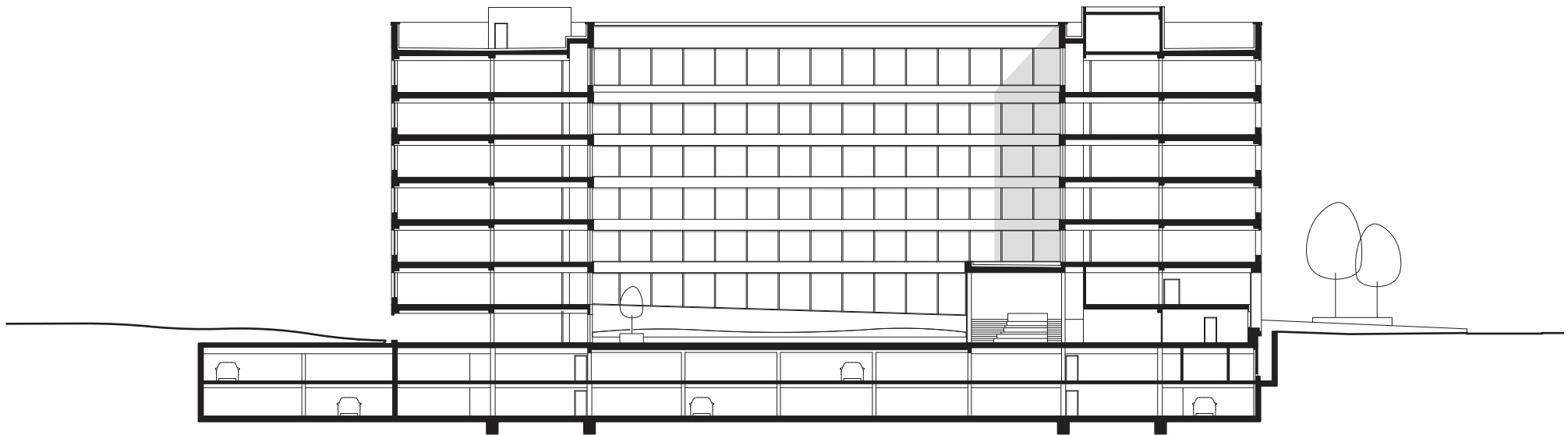
west gevel



1:500

POLO.

urbanism
architecture
interior design
labs



Kortrijk Business Park

snede aa

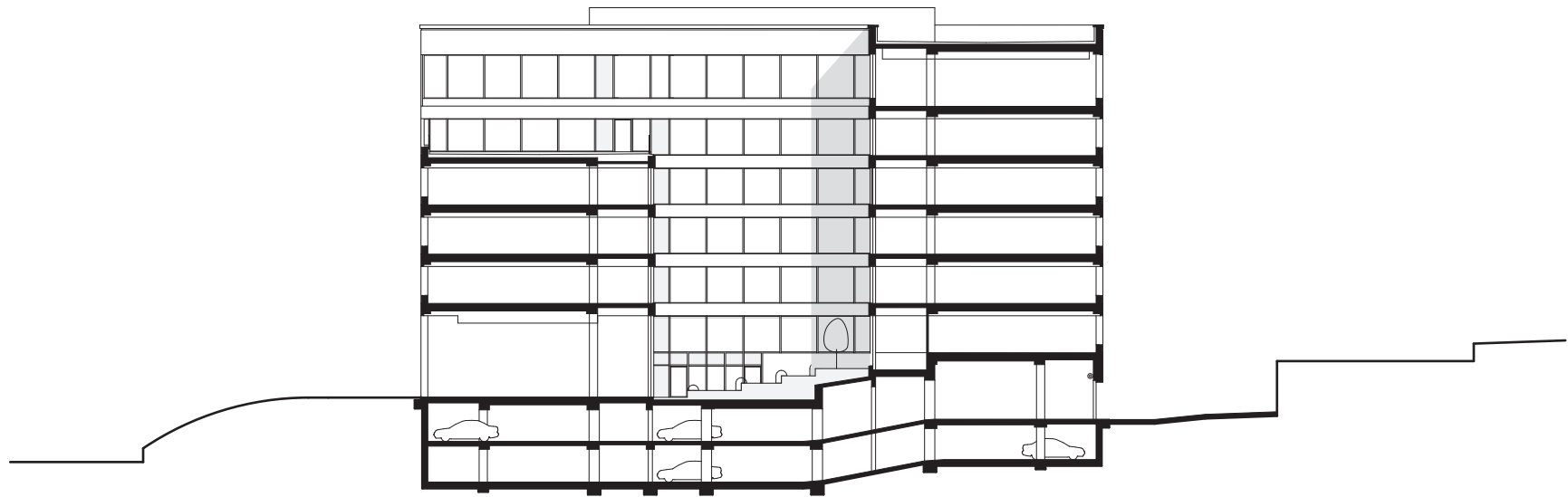
0 10 20 m

A horizontal scale bar with three segments. The first segment is labeled '0', the second '10', and the third '20 m'. The segments are separated by vertical tick marks.

1:500

POLO.

urbanism
architecture
interior design
labs



Kortrijk Business Park

snede bb

0 10 20 m

A horizontal scale bar with three segments. The first segment is labeled '0', the second '10', and the third '20 m'.

1:500